

NON-WOVEN AND TEXTILE VINYL WALLPAPER INSTALLATION GUIDE

However Non-Woven and Textile Vinyl wallpapers are easy to apply on the wall, but we still recommend to work with a professional to hang the wallpaper.

Tools you need

- Soft brush for smoothing
- Sharp knife (Stanley/craft)
- Pasting brush or roller
- Wallpaper adhesive
- Plumb line / spirit level
- Seam roller
- Scissors
- Straight edge / ruler



Tips Before Starting

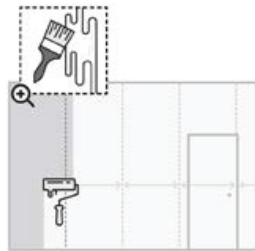
We recommend 2 people to install your wallpaper mural. Make sure your wall/surface is clean, dry and dust-free. If your surface has been freshly painted, wait at least two weeks for the paint to fully cure before applying your wallpaper wall mural. Don't apply your wallpaper on vinyl or rough textured walls.

1. Check your panels

Your wallpaper will be supplied in panels. Panels need to be applied onto your wall in order, starting from the left. Start with panel number 1. Numbers are placed at the bottom of the panels.

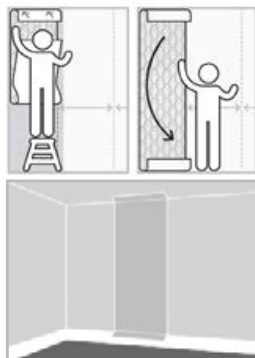
2. Mix paste and apply

Make up the wallpaper paste according to instructions on the back of the paste pack you have. Roll the paste onto the wall allowing a bit wider than the first panel. We recommend a medium pile paint roller for this.



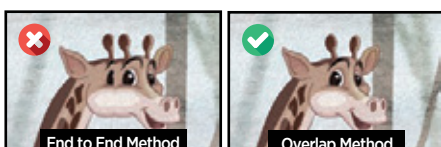
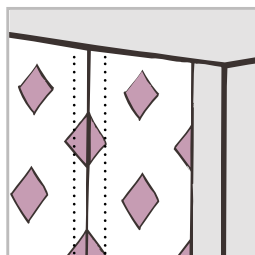
3. Smooth the panel

Place the first panel with the extra bleed overlapping top and bottom (you can cut this off later). Smooth over with a foam rubber roller or wallpaper brush to remove any bubbles or wrinkles. **IMPORTANT:** Do not pull or stretch the material during installation. Work from the top and allow the wallpaper to fall naturally, taking particular care to avoid scuffing or scratching the printed surface.



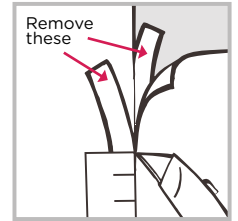
4. Overlaps

For your convenience, our panels may have a small overlap (-0,7 inch). These ends allow for a seamless transition between panels. Overlaps are repeated sections of your image on each of the panel's seams. Line up overlaps on top of one another from the top and as you work your way down.



5. Cutting Overlaps (Double Cut)

We recommend leaving the overlaps overlapped on the seams to prevent shrinking during temperature changes. However, in order to guarantee a perfect, flush fit between seams, one can cut the underlying overlap or leave as is. Cut through the centre of the overlap and the underlap using a new and very sharp blade, with precision metal edge as a guide. Pull away the underneath strip first then the second strip. Flap back the edges and re-paste. Press edges back into position to form a perfect join. **IMPORTANT:** You should not make the double cut after the adhesive has completely dried.

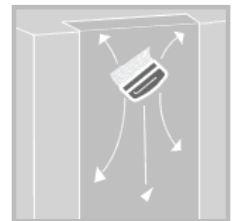


6. Apply the rest of the panels

Repeat this process for all the panels.

7. Smooth out bubbles

Using a foam rubber roller carefully go over all applied wallpaper, smoothing out any creases or bubbles.

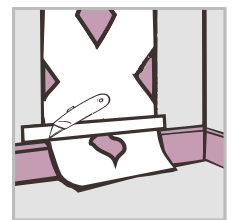


8. Remove excess adhesive

Adhesive that comes out between the joins should be removed immediately with a damp sponge or cloth.

9. Trim off the excess

Once all the panels have been applied, carefully trim the excess wallpaper on the bottom and top, using a sharp utility knife and a metal ruler as a guide.



10. Installing Around Light Switches, Power Outlets

Remove any power outlet cases before installation. Unroll the wallpaper panel over the outlet and using your utility knife, roughly cut the wallpaper as close to the edge of the power outlet as possible, exposing the outlet. Smooth the panel around the outlet and trim off any excess wallpaper. Put the outlet cover back on to hide any rough edges.

