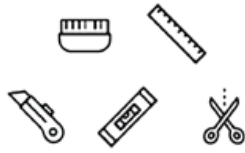


PEEL AND STICK WALLPAPER INSTALLATION GUIDE

However Peel and Stick wallpapers are easy to apply on the wall, but we still recommend to work with a professional to hang the wallpaper.

Tools you need

- Tape measure • Spirit level • Straight edge / ruler • Sharp knife (Stanley/craft) • Scissors
- Pencil • Plastic Smoother



Tips Before Starting

We recommend 2 people to install your wallpaper mural. Make sure your wall/surface is clean, dry and dust-free. If your surface has been freshly painted, wait at least two weeks for the paint to fully cure before applying your wallpaper wall mural. Don't apply your wallpaper on vinyl or textured walls. Remove any power outlet cases before installation.

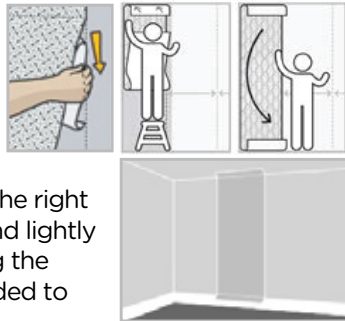
1. Check your panels

Your wallpaper will be supplied in panels. Panels need to be applied onto your wall in order, starting from the left. Start with panel number 1. Numbers are placed at the bottom of the panels.

2. Let's start

Beginning on the left side of your wall, measure out from the corner the width of the paper and mark the wall lightly with a pencil. Put your level on this mark and draw a straight, level, vertical line. This is the guide for your first strip, it is very important for it to be level. Remember to allow an extra inch or two for trimming both the top and bottom. (You can cut this off later).

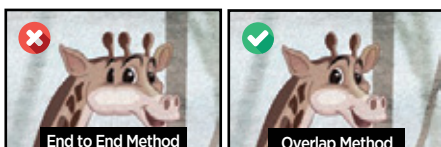
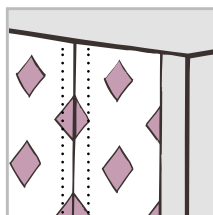
Peel about 12" of the backing away from the paper. Apply the paper to the top of the wall, allowing a bit of excess to overlap the ceiling which will be trimmed off later. Align the right side of the strip to your mark and lightly press the edge to the wall along the mark. You can reposition if needed to ensure a vertical seam.



IMPORTANT: Do not pull or stretch the material during installation. Do not force, **let gravity assist you**. Or else patterns on the panels may not match perfectly. Work from the top and allow the wallpaper to fall naturally. For best results, have one person guide the paper at the top and along the seam, while another holds the opposite edge away from the wall until the seams are lined up.

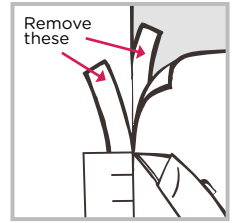
3. Overlaps

For your convenience, our panels may have a small overlap (-0,7 inch). These ends allow for a seamless transition between panels. Overlaps are repeated sections of your image on each of the panel's seams. Line up overlaps on top of one another from the top and as you work your way down.



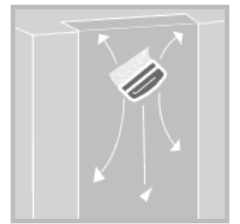
4. Cutting Overlaps (Double Cut)

We recommend leaving the overlaps overlapped on the seams to prevent shrinking during temperature changes. However, in order to guarantee a perfect, flush fit between seams, one can cut the underlying overlap or leave as is. Cut through the centre of the overlap and the underlap using a new and very sharp blade, with precision metal edge as a guide. Pull away the underneath strip first then the second strip.



5. Smooth the panel

Using a plastic smoother, work your way down the strip in a back and forth motion, smoothing the material to the wall and pushing out any air bubbles. Trim off excess material at ceiling and baseboard with a straight edge and sharp razor knife.

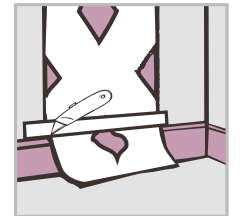


6. Apply the rest of the panels

Repeat this process for all the panels.

7. Trim off the excess

Once all the panels have been applied, carefully trim the excess wallpaper on the bottom and top, using a sharp utility knife and a metal ruler as a guide.



8. Installing Around Light Switches, Power Outlets

Remove any power outlet cases before installation. Unroll the wallpaper panel over the outlet and using your utility knife, roughly cut the wallpaper as close to the edge of the power outlet as possible, exposing the outlet. Smooth the panel around the outlet and trim off any excess wallpaper. Put the outlet cover back on to hide any rough edges.

